



# Tamarack Tales

Tamaracks Resort, Seeley Lake, Montana

## Not Just Tamaracks



Spruce



Aspen



Birch



Pine



Fir

The Tamaracks Resort is home to many different species of trees, one of which the resort was named after, the Tamarack, or western larch. Listed here are a few other trees you may see while wandering around our property.

## bits & pieces

(FYI: Fireworks are a no-no on the resort property by federal law. Inquire at the office for information on places where you can set off your fireworks.)

(Did you know that in the original *Oxford English Dictionary* there is a twenty-three page essay on one word - set?)

(Did you know that there are 2,500,000 rivets in the Eiffel Tower?)

(Did you know that the world's population increases by 140 people per minute?)

(Did you know that the New York Public Library adds nearly a million items to its collections each year?)

## This week's weather

(As if we know!!)

### Five-Day Forecast

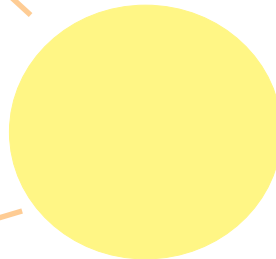
- Sunday: High 72, Low 44 Partly Cloudy
- Monday: High 79, Low 48 Partly Cloudy
- Tuesday: High 84, Low 53 Partly Cloudy
- Wed: High 84, Low 54 Scattered Thunder Storms
- Thurs: High 83, Low 54 Scattered Thunder Storms

Source: The Weather Channel [www.weather.com](http://www.weather.com)

## Where has Summer Gone?

We are sick and tired of the rain!!!!!! We have been feeling like we are living in the middle of a rain forest. Everyone needs to help us hope for clear skies and sunny days!

Some of us have even forgotten what the sun looks like!!!!!!



### Moon phases

June 27 June 30 July 1



## Learn a bit about Moose



**Size:** 7 1/2 to 10 ft long, tail, 2 1/2 to 3 1/2 inches, shoulder height, 5 to 6 1/2 feet

**What to look for:** large size; antlers (males) massive, flattened, pronged; fleshy dewlap on throat; upper lip overhangs lower

**Habitat:** northern forests; often around fresh water

## wildflower of the week



Beargrass

**Size:** 1 to 6 feet tall; flower 1/2 inch wide  
**Habitat:** mountain meadows, dry slopes, open forests

**What to look for:** flowers creamy, starlike, in dense, rounded cluster atop stout stalk; leaves grass-like, stiff, rough-edged, densely clustered at base and scattered along stem.

**In bloom:** May through August